



**SPIERINGS
KRANEN**

Mark: **SPIERINGS**

Type: **SK345-AT3**

Crane identification

Serial number : 34510
Year of construction : 1991
Crane group : 3 as per NEN 2018
Stability : as per NEN 2022

Identification-
number

41 tm

Max. load

5.0 tonne

Max. radius
with max. load

9.3 m

Max. capacity

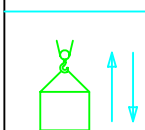
46.5 tm

Max.
jib length

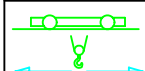
30.4 m

Speeds

Horizontaal / 30° getopt



m/min	kg
11	5000
18	2500
35	1200
50	0



0 - 40 m/min



0 - 0.9 rpm

All motions with
hydraulic proportional
controls.

Driving with erected
tower and jib, only
with jib horizontal
and positioned over
the front, platform
locked to the
carriage. Maximum
inclination 2°.

- Rated lifting capacity is net capacity.
- Crane equipped with full counterweight: 7080 kg.
- Outriggers extended and down as per diagram.
- 360° continuous slewing, with outriggers out and down.
- 2 outrigger positions 6.90 x 5.40 m and 6.90 x 3.80 m.
- Operating allowed up to a windforce of 8 on the Beaufort scale. (wind speed 20m/sec)
- Sail area of the load max. 1.0 m²/ tonne at a windforce of 8 on the Beaufort scale.
- Operating temperature range from -15° to +40°.
- In all cases 2 parts of line.
- Max. line pull force 2500 kg.

- The crane should be folded when not in use for long periods.

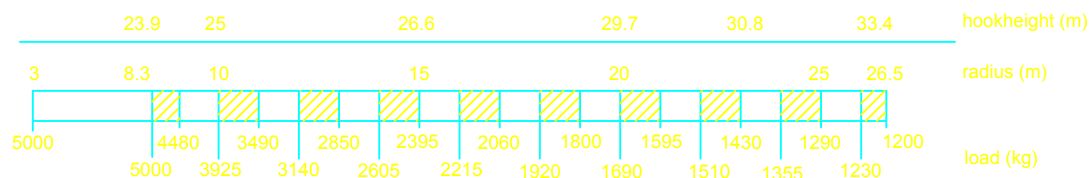
Lifting chart Outrigger spread 6.90 m x 5.40 m

Jib horizontal

Hookheight 19 m (height under jib 20.8 m)



Jib offset +30°



Lifting chart Outrigger spread 6.90 m x 3.80 m

Jib horizontal

hookheight 19 m (height under jib 20.8 m)

