



SPIERINGS KRANEN



SK 598-AT5

**Spierings unfolds a crane with
amazing advantages.**



Technical specifications Spierings hydraulic Folding Crane model

Capacity : 103 tonne/m
 Max. load : 8000 kg at 12.8 m
 radius :
 Max. jib length : 48 m (1700 kg)
 Max. lifting height : 53 m

Features

- All motions with hydraulic proportional controls. A 37 KW electric motor drives three hydraulic pumps:
 1st Pump for slew motion (pump is mounted in a closed cycle);
 2nd Load-sensing pump in behalf of hoisting;
 3rd Load-sensing pump in behalf of trolley movements. Also used for the erecting process.
- A comfortable crane cab, equipped with separate control system and a display indicating:
 1. Radius of the load;
 2. Hook height;
 3. Max. load as per lifting chart;
 4. Load in kgs.
 The cab is also equipped with a radio, fire-extinguisher, intercom system, cabin lighting and heating (3000 W). There is also a windscreen wiper and washer system. 10 windows assure excellent visibility of the load and working area, 4 can be opened for ventilation. Floor area: 1700 x 850 mm. The operator can mount the cab on the lower or on the upper mast section. By just putting one bolt in the roof or the floor of the cab, the position (height) can be selected.
- Jib with 30° offset controlled from the crane cab or via remote controls. Trolley movements are as under normal operation. Because the hoist rope end is fixed to the trolley (automatic during erection of the crane) the hoist rope compensation system ensures the hook remains at the same height during trolley movements both forward and reverse. This enables precise operation, even with the jib offset and with a load of 8000 kg. Erection and lowering is fully automatic. Changeover time is approx. 4 mins. This has to be done without any load in the hook.
- An elevator instead of the ladder to the crane cab.
- Automatic greasing system for the crane.
- Automatic greasing system for the carrier.

- Toolbox over the full width of the carrier with top lids and sliding doors, mounted at the rear of the carrier.
- Four fibreglass outrigger pads (1000 x 1000 x 20 mm) complete with stowage. Four steel outrigger plates (2000 x 900 x 76 mm) on the toolbox.
- Driveable with erected tower and jib under the following conditions:
 1. Jib horizontal and positioned over the front carriage, locked;
 2. Acceleration / braking of the carrier: max. 1 m/sec²;
 3. Maximum driving speed 60 m/min;
 4. Maximum inclination 2°;
 5. Maximum wind speed: 10 m/sec (Windforce 5 Beaufort);
 6. Outriggers fully extended.

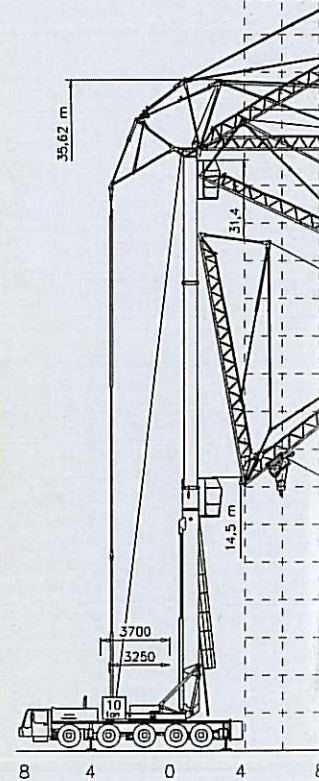
Notes for Lifting Chart

- Rated lifting capacity is net capacity.
- Crane equipped with full counterweight (8700 kg).
- Outriggers extended and down as per diagram.
- 360° continuous slewing with outriggers out and down.
- 2 outrigger positions 7.20 x 7.20 m and 7.20 x 5.65 m.
- Operating allowed up to a windforce of 8 on the Beaufort scale (wind speed 20 m/sec).
- Sail area of the load max. 1.0 tonne/m² at a windforce of 8 on the Beaufort scale.
- Operating temperature range from - 20° to + 40° C.
- In all cases 2 parts of line. Max. line pull 4000 kg.
- The crane should be folded when wind force exceeds 10 on the Beaufort scale or when not in use for long periods.

Operating on Mains Power

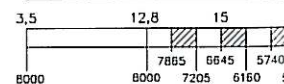
Consumption of electric motor driving the hydraulic pumps: 37 kW.
 Power consumption during crane operations: 70 kVA, 380 V, 50 cycles.
 Fuse: 100 Amp. slow acting.
 Power consumption during erecting / folding of the crane: 60 kVA, 380 V, 50 cycles.
 Fuse: 80 Amp. slow acting.
 Power consumption working lights (4 gas-discharge-lamps) 4 kW.

- Max. outrigger loading: 400 kN.
- Outrigger foot: 750 x 600 mm.
- Pressure under foot: 0.89 N/mm².
- Jib can be unfolded through 360°.
- Jib with 30° offset. Can be controlled from crane cab.

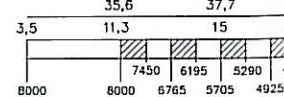


Lifting chart

Jib horizontal

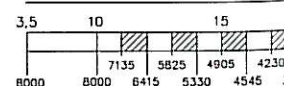


Jib offset +30°

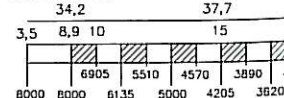


Lifting chart

Jib horizontal



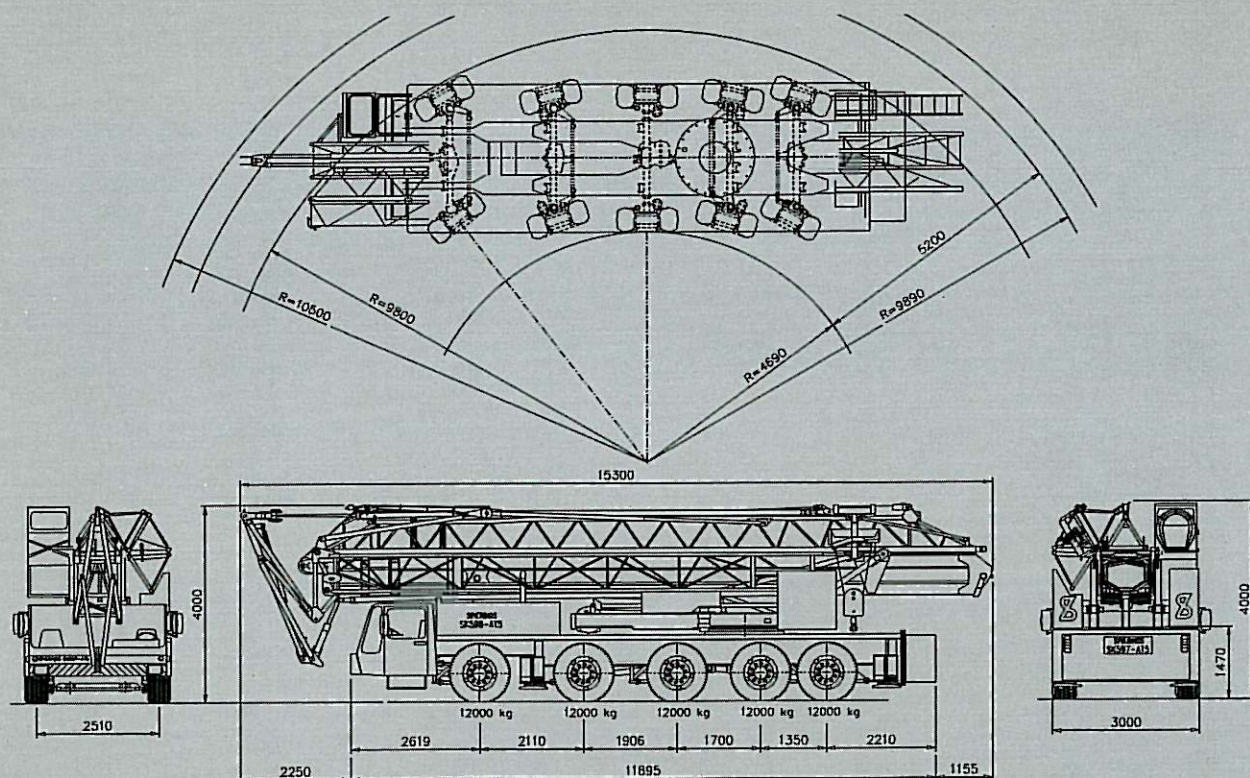
Jib offset +30°



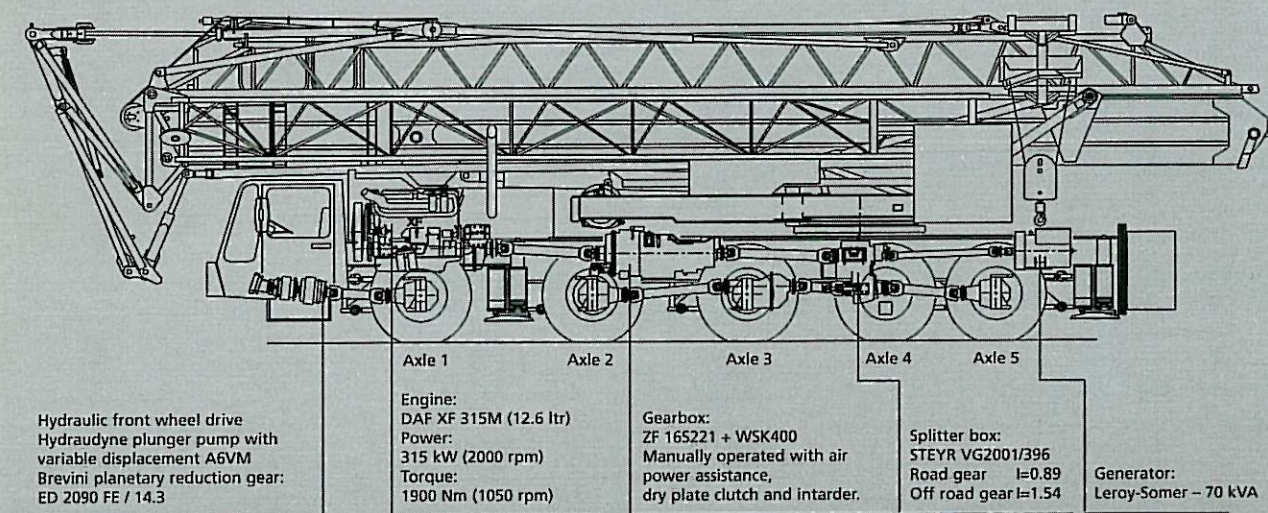
E. Crane and carrier sign written and nameplate mounted in the jib.

Technical Specifications Spierings truck model AT5

The cab is a modern designed two-seater, equipped with comfortable seats (air suspension), radio, heated exterior mirrors, electric window lifts, fire-extinguisher and cruise-control.
The instruments are arranged in a convenient, functional semi-circular layout.



Drive train



Axle (1), 2, 3 and 5: GINAF with DAF differential and DAF end reduction.

Axle 4 : GINAF axle, non powered.

Suspension : hydro-pneumatic on all axles. Stroke spring cyl. 217 mm.

Max. speed carrier : 80 km/h

Min. speed carrier (diesel engine at 1000 rpm) : 1.6 km/h

Overall weight : 60 tonnes

Spierings Folding Crane, the best solution



SPIERINGS KRANEN BV

Merwedestraat 15 5347 KZ Oss The Netherlands Telephone +31 412 62 69 64 Fax +31 412 64 52 99