

SPIERINGS

Building the brand together.



Lift to the max.





Let's Innovate Together.

We proudly present the second edition of our magazine. This time the focus is on our exceptional products as well as the real heart of our company: our people. They all experience the Spierings feeling in their own, unique way.

Collaboration is at the heart of the way we do business – collaboration with our customers, suppliers and of course our employees. Without their dedication and knowledge, we could not build cranes, provide service or excel at building mobile tower cranes. High time to introduce some of the people behind our Spierings cranes.

The picture on the left page shows the delivery of our very first City Boy 2.0 – a crane that challenged our company to the max. It features not only advanced technology but also the DNA of our 370 colleagues. Because only together are we capable of such great achievements. An interesting fact: we now have over 250 eLift cranes in the field based on the City Boy!

This edition of the magazine will also focus on technology and innovation. Among other things, we recently expanded our product range with the SK2400-R eLift. Find out how this new crane contributes to a greener future, increases efficiency for our customers and reduces operational costs.

In short, there is plenty to tell. We hope this magazine inspires you. Joining forces for a more sustainable future.

Finally, we would like to express our gratitude to our customers for their trust in Spierings.

Building the brand together.

Koos Spierings

**“With the efficiency of the SK2400-R,
our customer saved one-third of the time
during the two-year construction period.”**



Zurndorf, Austria

The strongest and most sustainable mobile tower crane on a crawler frame

Our SK2400-R eLift has been upgraded with the revolutionary electric hybrid eLift 2.0 technology! The result is a crane concept with smart technology, unprecedented versatility and even greater convenience.

The redesigned divisible counterweight system, which allows you to choose between two different counterweight blocks as well as whether to mount the tracks, provides a phenomenal 88 lifting charts. The SK2400-R eLift is a powerful all-rounder that adapts to any situation, from various long-term projects to quick hoisting tasks.

Maximum efficiency

The erection process has been optimised for maximum efficiency, with improved counterweight installation technique and automatic hoisting rope selection based on outrigger width and counterweight configuration. This not only saves time but also enhances operator convenience.

Impressive hoisting capacity

With an impressive hoisting capacity of 18t to 14.6m and 5.5t tip load, this is the strongest mobile tower crane in the world. The optional jib length of up to 50 metres enables this crane to hoist to heights of up to 60m.

More powerful yet also more economical

Thanks to the eLift 2.0 technology, the SK2400-R eLift is not only more powerful but also more economical and therefore more environmentally friendly. With a diesel engine downsized from 187 kW to 55 kW and the possibility of 100% electric operation, this crane reduces fuel consumption and therefore also CO2 emissions. The SK2400-R eLift also offers greater comfort and safety, as there is no longer any noise nuisance from a constantly running diesel engine.

Ergonomic step

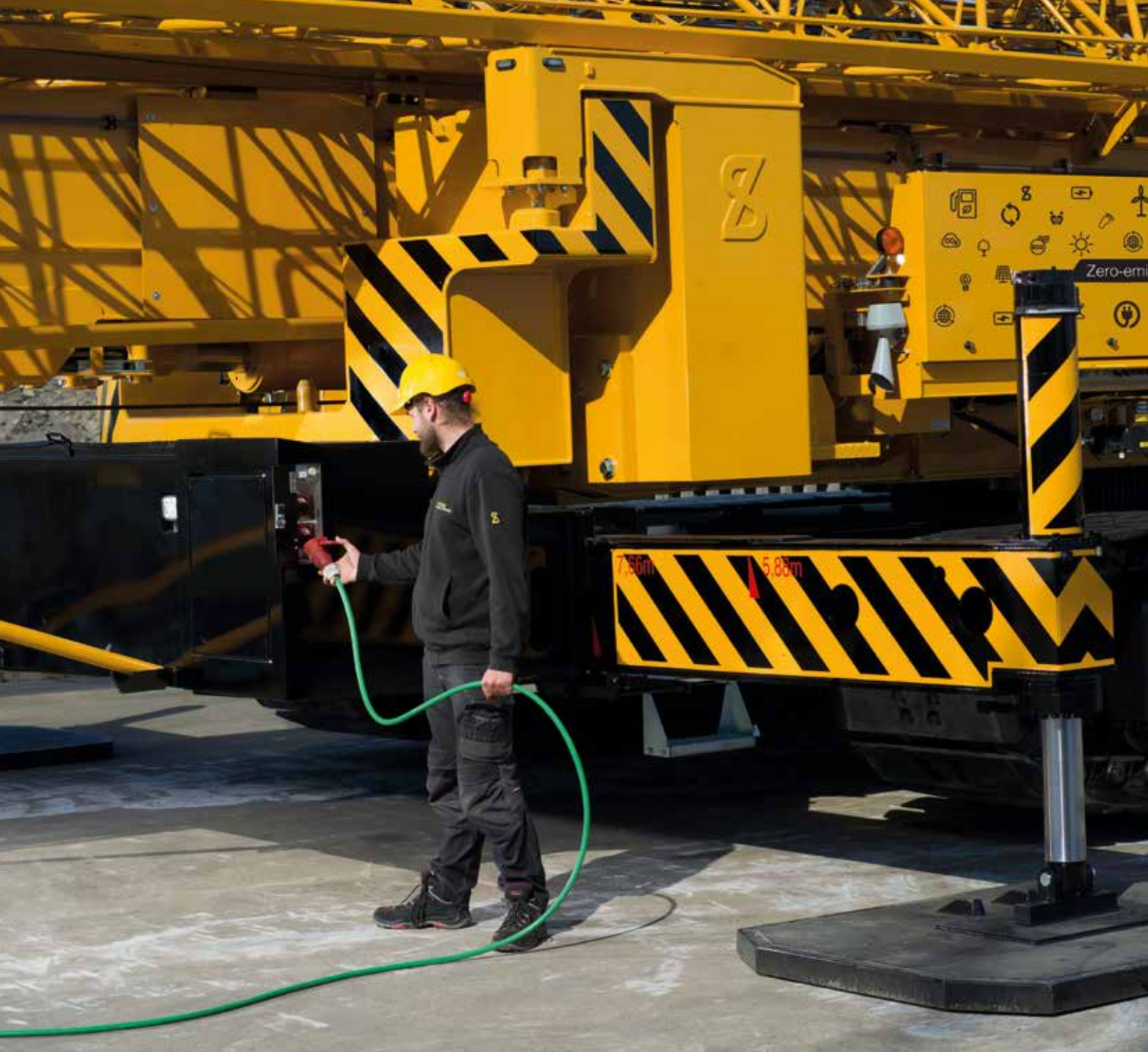
Operating comfort and safety have also been improved with an ergonomic step on both sides of the crawler chassis and an updated remote control with clearer functions for both driving and hoisting. Moreover, crane driving is now done with a two-hand control to further improve safety.

Two transport trailers

With only two trailers for transport, a quick erection time of less than 60 minutes and a self-installing system for the counterweights and tracks, the SK2400-R eLift makes every job more efficient and effective.

Future-ready

The future of sustainable power takes on a new dimension with our latest technological innovation: the electric hybrid mode of our mobile crawler tower crane. In electric mode the diesel engine is not started, so our machines operate fully electrically. In hybrid mode the eco-mode is automatically activated. This means the small diesel upper engine only starts when energy is actually needed. The result: fuel savings, minimisation of CO2 emissions, reduced noise nuisance and a significant reduction in operational costs. Clearly, the SK2400-R eLift is ready for the future! ■



**“Fuel savings, minimal CO2 emissions,
reduced noise and lower operating costs”**



An eLift for young and old

An eLift in your living room? With working hoisting hook? No problem! With our LEGO model, young and old can build and play to their heart's content. Let's inspire the new generation!

It's a special project from Spierings Mobile Cranes: developing a LEGO scale model of our SK597-AT4 eLift. Belgian LEGO designer Tom de Mol designed it for us. With a scale of 1:57, this eLift will fit in any living room.

Hours of building fun

The model consists of 462 real LEGO bricks, and no fewer than 122 different parts. Construction takes about two and a half hours, and the finished model is a beautiful piece of engineering – a wonderful experience for enthusiasts of all ages.

Small but powerful

The scale model is both detailed and functional. The LEGO eLift has extendable outriggers, a working hoisting hook and various other moving parts. You can also fold and unfold the crane, between the erected and transport positions, just like the real crane.

Tomorrow's makers

At Spierings Mobile Cranes, we believe that today's talents are tomorrow's makers. We hope this model will not only bring joy to enthusiasts of Lego and engineering, but also provide inspiration to the next generation of builders and operators. ■

Building the brand together.



“At Spierings Mobile Cranes,
we believe that today’s talents
are tomorrow’s makers”





**“New eLift 2.0 provides
extra fuel savings”**

A further step in sustainable hoisting with the eLift 2.0

The future of sustainable hoisting has taken on a new dimension with the eLift 2.0. Consider the introduction of the automatic start/stop system: this allows the crane to operate stand-alone on battery power, when no mains connection is available, for example.

When the battery is low, the generator automatically starts charging the battery. With the automatic start/stop system, fuel consumption is reduced to less than 2 litres per hour, compared to 7 litres per hour for a conventional crane. By combining operation in 40% electric mode and 60% hybrid mode, the new eLift 2.0 achieves up to 85% fuel savings. This equates to a reduction of 36,500 kg of CO₂ and offsets 1,694 trees within 10 years.

Unlimited electric hoisting

The success of the eLift is proven by the fact that the average electric operation of all eLift cranes exceeds 40%. The main key to the concept's triumph is the small site power connection (16A or 32A) required for unlimited electric operation.

Standard for sustainable hoisting

Since the delivery of the first eLift crane in 2020, Spierings has been setting the standard for sustainable hoisting. This first battery-powered solution on a mobile tower crane makes electric operation possible during everyday material shifting jobs. Since the launch of the eLift, Spierings has produced over 250 cranes with a PowerPack.

All USPs at a glance

- 50% to 75% fuel savings using eco-mode in hybrid mode (4 to 6 litres of fuel saved per hour; up to 9,000 litres of fuel saved per year).
- 100% fuel savings in electric mode.
- Full capacity and speed in electric mode.
- Stand-alone battery mode.
- Silent operation of the crane.
- Stand-alone battery-powered crane operation.
- Stage V crane generator, without AdBlue.
- Unlimited electric operation with 16A or 32A connection.
- Efficient battery use for long life.
- Switching between various modes is done without interrupting the machine.
- Proven eLift concept, with over 250 successfully operating systems. ■



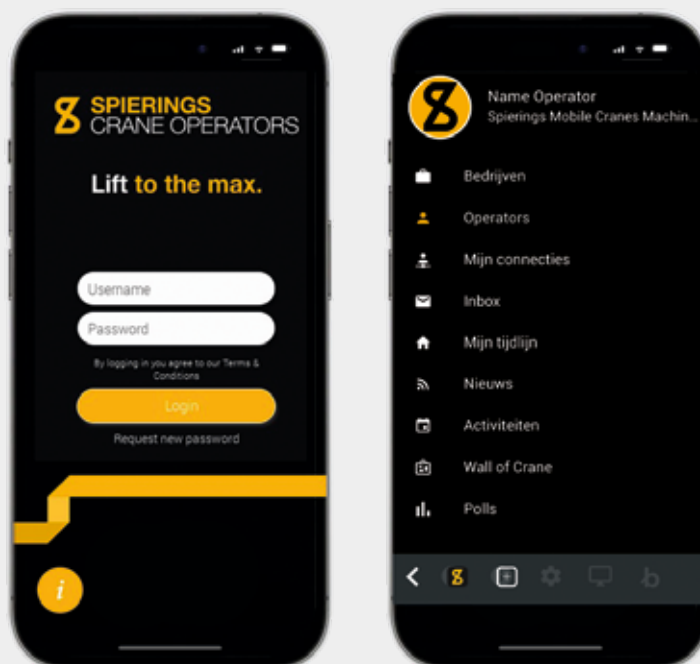
“The first battery-powered solution on a mobile tower crane”

NEW! The Spierings Crane Operators' Community







We are proud of our operators, who work in our Spierings cranes day in, day out. They are our most important ambassadors and are an important base for our business. Without operators, there is no Spierings! To bring them together, we are introducing the new Spierings Crane Operators' Community.

The Spierings Crane Operators' Community was established with the aim of providing a platform where operators can meet, share experiences and gain valuable knowledge. To join our community, scan the QR code and complete the registration form. You will then receive your login details and an invitation to download the app by e-mail.

Once installed, you will get instant access to all privileges.



The Spierings Crane Operators' Community:

-  **News and innovations**
-  **Summer and winter tips**
-  **Share your Lift to the max moment**
-  **Gifts & Awards**
-  **Discount on Spierings merchandise**
-  **Share your tips from the field**



Good to know: Membership is free 😊 .

We look forward to welcoming you to the Spierings Crane Operators' Community soon! ■

The tyre for Spierings cranes

In July 2024, Michelin will launch the Michelin X-Crane 2 in 22.5-inch rim size: the ideal tyre for mobile tower cranes. Built for efficiency, designed for safety.

For more than 130 years, Michelin has been at the forefront of advances in mobility, driven by materials science and technological advancements. This has made them the market leader in the tyre industry.

Combined knowledge

In recent years, Spierings and Michelin have joined forces, combining their knowledge and skills. The goal: to develop the ideal tyre that increases the productivity of the Spierings SK models by minimising machine downtime due to sudden pressure loss or premature tyre wear.

Two major advantages

Thanks to this collaboration, Michelin is launching the first 445/75 R22.5-inch tyre designed specifically for the Spierings mobile tower crane: the Michelin X-Crane 2. This tyre features a new tread pattern inspired by Michelin's truck tyre design. There are two major advantages to this innovative approach, productivity and endurance.

Productivity

The Michelin X-Crane 2 makes efficient transport between construction sites possible, thanks to a speed rating that allows it to travel at theoretically 100 km/h on the road, with an optimal load capacity of 6,500 kg. It is also designed for use in difficult driving conditions, such as on snow and rough terrain.

Endurance

The Michelin X-Crane 2 has an innovative carcass design that improves the tyre's thermal performance. This reduces heat build-up during use and extends tyre life. It also increases overall safety.

With this combination of innovations, Michelin and Spierings are improving mobility for operators of mobile tower cranes without compromising safety, regardless of the conditions. ■

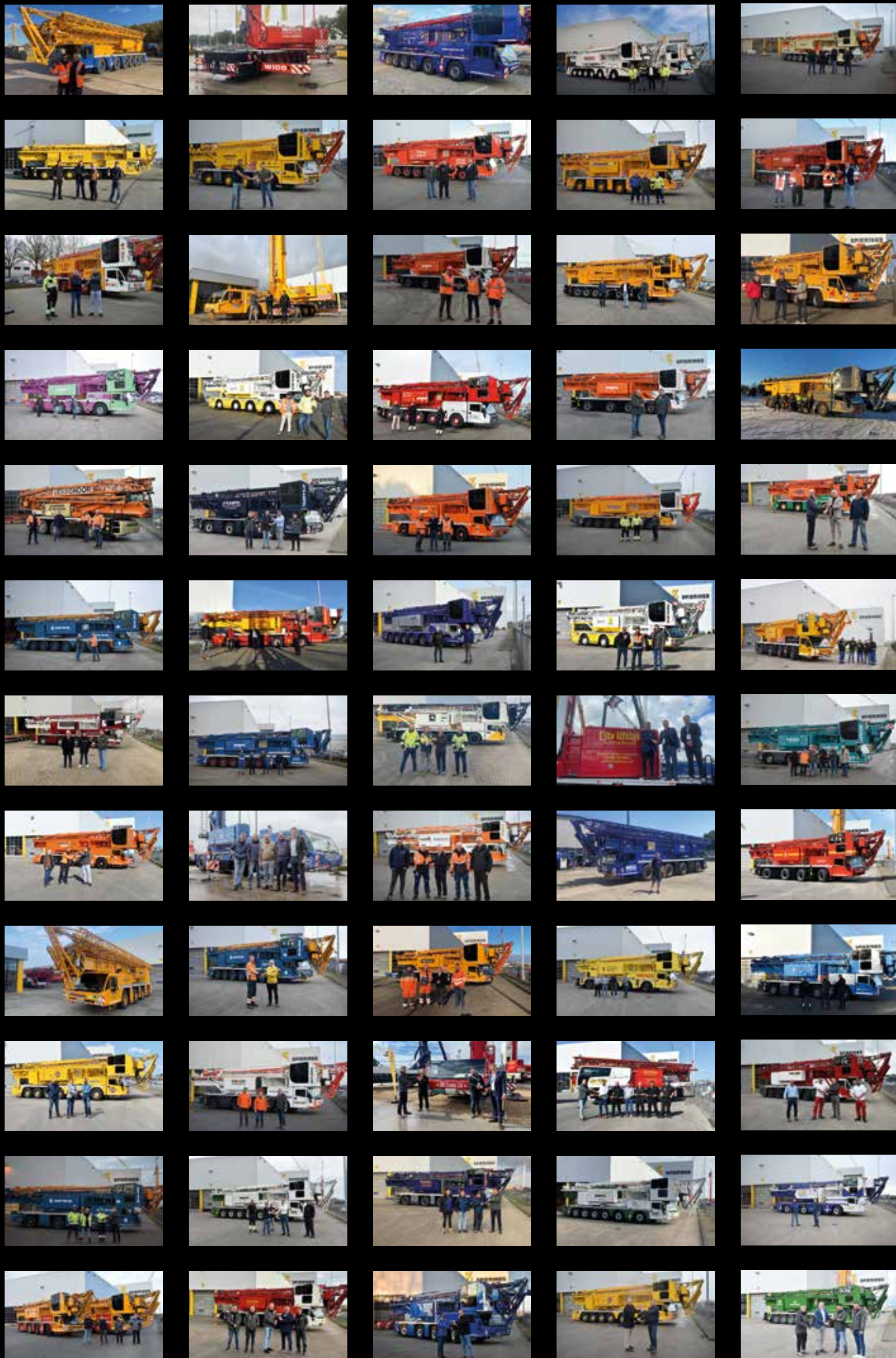


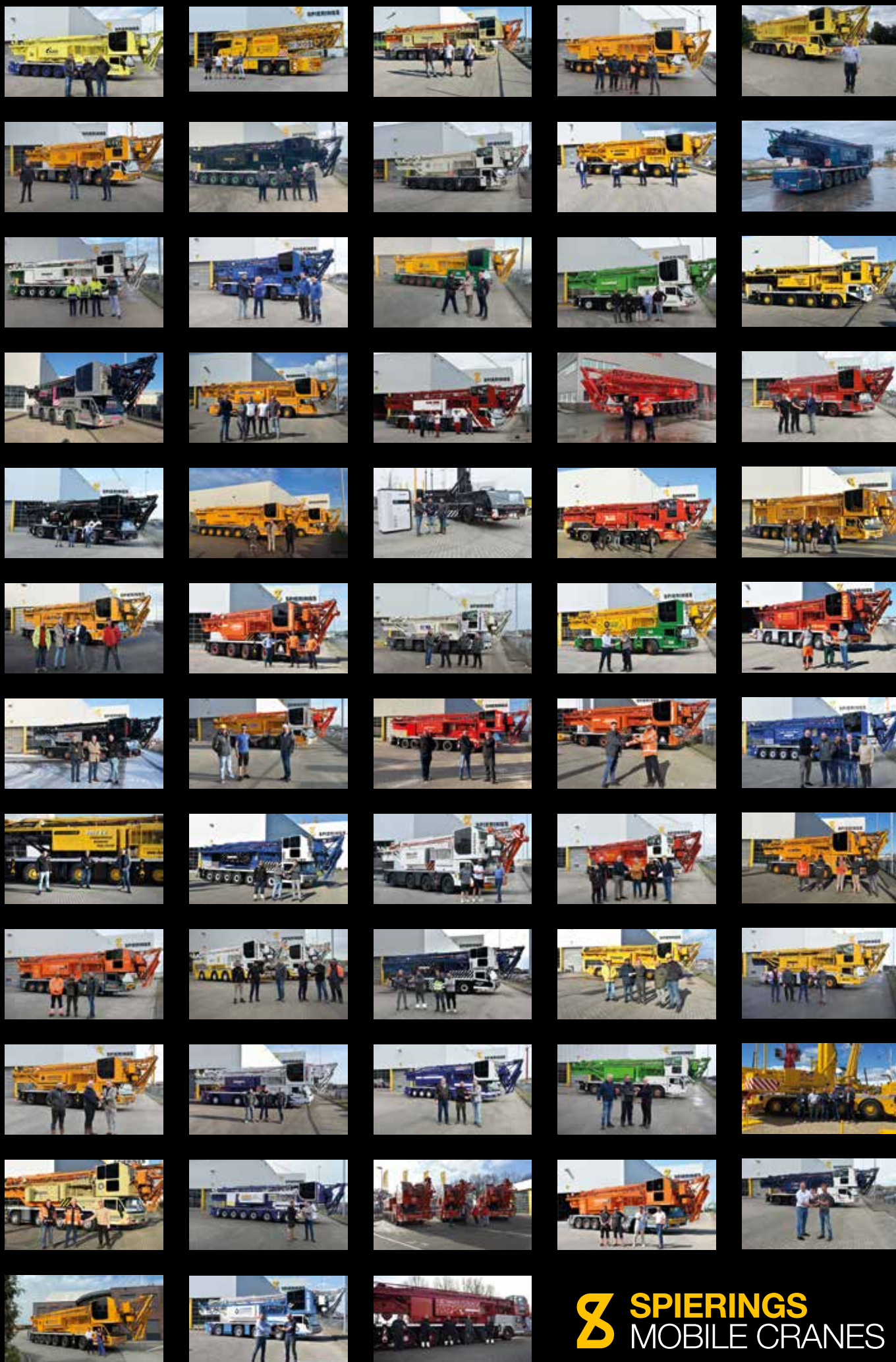
Proud Koos Spierings with his daughters Saar and Merle.

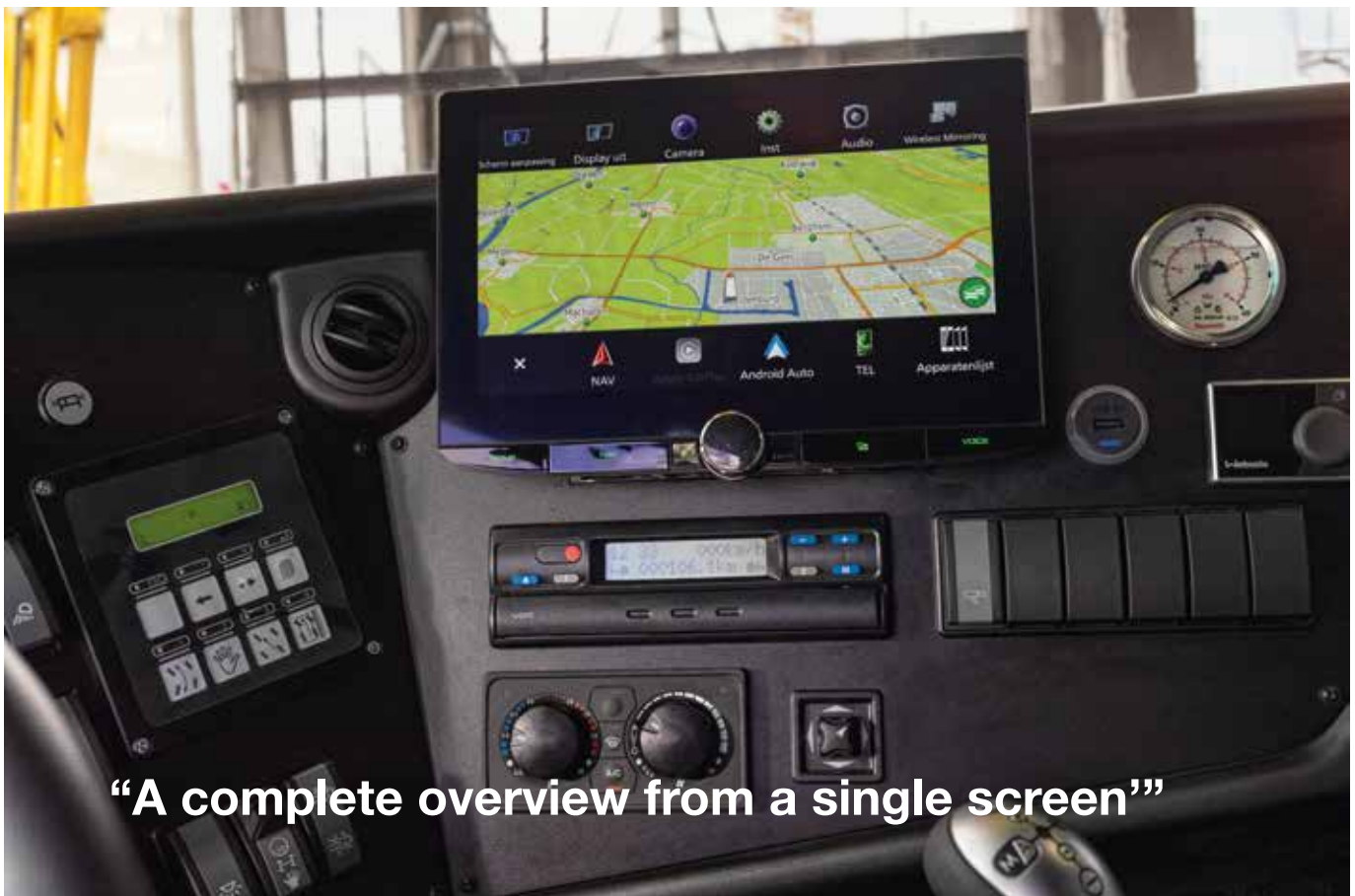
“The Michelin X-Crane 2 has been specially designed for the Spierings mobile tower crane”

Wall of eLift Cranes









"A complete overview from a single screen"

New truck cab: added comfort, new functions

As Spierings, we believe a good thing can always be made better. That is why, in late 2022, we upgraded the truck cab interior of two of our models. The result? Added comfort, new functions and greater safety.

The truck cabs of the SK1265-AT6 eLift and SK597-AT4 eLift have undergone a metamorphosis. What has changed? A lot! To start, the colour of the interior panels are now dark instead of light. The height and depth of the steering wheel is adjustable. There are also steering wheel buttons for the cruise control, speed limiter and engine speed.

New features

The truck cabs have even more new features, such as:

- A fully digital dashboard
- Efficient button layout
- Climate control
- Digital multimedia system
incl. Apple CarPlay and Android Auto

Good visibility

With the new touchscreen, there is no need for a second screen, not even if you have a side-view camera. The video from the reversing camera (on the underside of the outer tower) and side-view camera instantly appears on the touchscreen when you reverse or turn right. You can also switch between cameras with a button (to the right of the touchscreen).

Is your crane equipped with a second reversing camera on the rear toolbox? You can use the control button for switching between the feeds from the two rear cameras. Do you also have a side-view camera? Then the feed from this camera appears on the touchscreen when you are turning right. The system is set up to give you a good overview with a single screen, all to provide a safe and comfortable journey. ■

A bright future: Spierings expands in southern Europe

The number of Spierings cranes continues to spread around the world. More and more countries are embracing our crane concept: so far, over 1,400 Spierings cranes have found their way to all corners of Europe and beyond. Thanks to Sales Engineers David Colombat (France), Rafael Morales (Spain) and our Dutch colleague Ralph Disveld (who speaks Italian well), we are gaining a foothold in the southern European countries.

The crane population in France and Spain is growing at a rapid pace. And as it does, the Spierings crane concept is being welcomed with open arms. A wonderful development that we as a company are proud to see. We recently delivered our first new crane in Italy.

Scattered across Spain, there will be a magnificent fleet of over twenty Spierings cranes within two years. Our Sales Engineers are building excellent relationships in the Southern European countries. Consequently, we anticipate a bright future.

Service

Our service organisation also plays a vital role in growing the number of cranes in southern Europe. We are recruiting service partners and engineers in these regions to ensure our customers can count on excellent support. Customers must be able to always count on reliable service. Our support desk is available 24/7. ■



**“We recently delivered our
first new crane in Italy”**

Why South-European customers choose Spierings

Pizzolato Trasporti & Sollevamenti

'I first learned about Spierings' tower crane model several years ago,' says Simone Pizzolato, owner of the Italian company Pizzolato Trasporti & Sollevamenti. 'In 2022, our crane operator Davide stepped into my office. He wanted to have a chat with me about these models. We were curious and contacted Spierings. Together with my father Eugenio, I went to the Netherlands. There, we were immediately impressed by Spierings' professionalism, modern production lines and high level of service. The SK597-AT4 eLift immediately piqued our interest. This mobile tower crane is flexible, fast and loaded with features. The cabin comfort and good road handling, combined with the automatic gearbox, put a big smile on our faces. We look forward to enriching the Italian market with the very first SK597-AT4 eLift by mid-2024.'

Grúas Salvador

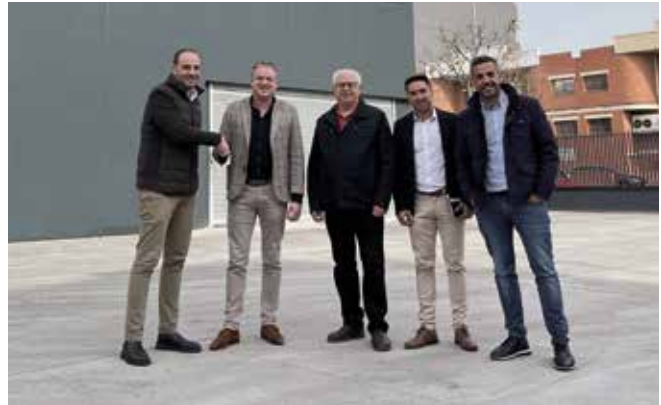
'At Salvador, we chose the eLift because of its environmental sustainability and electric mode,' says Alberto Garcia Codina, director of Grúas Salvador. 'In addition to the crane's technical characteristics and ability to get any job done, Spierings' focus on energy efficiency and emission reduction aligns perfectly with our corporate values. This crane allows us to work in a cleaner and more environmentally friendly way.'

Grúas Aguado

'We chose Spierings for several reasons,' says Alberto Aguado Gonzalez, director of Grúas Aguado. 'First of all, it is a reliable company with years of experience in the production of mobile tower cranes. We were also keen to incorporate their new concept into our fleet, as such a solution was still lacking. The integration of eLift means we can now work in environments where we couldn't before. In other words, a perfect match.'



Pizzolato Trasporti & Sollevamenti



Grúas Salvador



Grúas Aguado



Grúas Aguilar

“We are proud of our colleagues”



Herald Wattenberg | Commercial Director | with the company for 3 weeks

‘In a word, the feeling at Spierings is: **PROUD**, in bold capital letters. Proud of the powerful, impressive cranes, the company with all its employees and our many customers. I say “pedal to the metal!”.’

Jesse van de Bogaart | Accounts Payable Administrator | with the company for 4 years

‘For me, Spierings is the quintessential family business, where every employee is valued and, of course, we make very nice products.’



Patrick Tamo | Construction Fitter | with the company for 9 years

‘Spierings is innovative family business with a very pleasant work atmosphere. The company is there for its employees, resulting in engaged personnel and high job satisfaction. Even at the various parties, they go all out. I am a proud contributor to this company and its fine products.’

Rob van de Camp | Production Planner | with the company for 11 years

‘Spierings makes an excellent product and is a fine employer. I look forward to going to work every day. At Spierings, no challenge is too big, Lift to the max.’



Bryan Huijsmans | Supervisor Spierings Academy | with the company for 25 years

'I've worked at Spierings since 1999, and I still enjoy going to work every day. Spierings is a dynamic company where you get opportunities. That is, if you're willing to take on challenges. I've been able to develop myself, partly thanks to the Academy, in terms of knowledge, skills, and personal growth. Very valuable.'



Roy Ruijs | Co-operating Team Leader Assembly | with the company for 7.5 years

'If I had to describe Spierings in one sentence, I would say: a great place to work, where you can make the most of your ambitions and talents and no challenge is too big.'



John van Dieten | Technical Inspector | with the company for 2 years

'Spierings is a collegial company with a good work atmosphere, where every employee is valued. There is little hierarchy. As a team, we all do our very best to continuously improve the product, while always putting the customer first.'



Frank van Hoof | Mechanic Used Cranes | with the company for 2 years

'I would describe Spierings as a great employer where people are respected and valued and personal development is encouraged.'



Erhan Sönmez | IT System & Network Administrator | with the company for 3 years

'As a member of the IT team, I ensure effective and efficient provision of IT services. Spierings provides a vibrant working environment within an organisation that values teamwork. The company recognises and values the expertise and passion of every employee.'





Linda Romen | Payroll Officer | with the company for 7 years

'I regard Spierings as an excellent employer, with a positive, friendly work environment.'

Henny van den Wijngaard | Field Service Engineer | with the company for 23+ years

'I'm a field service technician. In my role, I repair cranes wherever there is a problem. Spierings is a wonderful company with great colleagues and a very impressive product.'



Ewa Kneblewska | Logistics Employee | with the company for 2 years

'I really enjoy my job as a warehouse worker. My colleagues are very nice, and together we make a great team. I recommend this company to everyone!'

Wilco van den Hurk | Facility Employee | with the company for 10 years

'I think Spierings is a good employer. Colleagues are always there for you, both professionally and privately.'



Sjoerd van Reenen | Maintenance Engineer | with the company for 7 years

'Spierings is a wonderful employer: flexible and supportive. The various projects keep the work challenging. I really appreciate the flat organisational structure.'



Rahime van Orsouw | Hostess/Assistant Sales Support | with the company for 2 months

‘Spierings is a very warm organisation, where you are seen and count. Here, you get the feeling that you can truly build together and everyone has their own important contribution in that.’

Jesse Verhoeven | Assembly Mechanic | with the company for 4.5 years

‘Spierings is a unique company that builds a super cool product, all within a fun and friendly work environment.’



Marcel de Kort | Co-operating Team Leader Assembly | with the company for 7 years

‘Spierings is a wonderful family business with fantastic, innovative products/cranes. I am proud to be part of this organisation.’

Bart Wingens | Quality Officer | with the company for 15 years

‘Spierings is a great employer, where we all work together to make a wonderful product.’



Izabela De Barros Umbelina | Assembly Mechanic | with the company for 2.5 years

‘For the first year and a half I worked in truck pre-assembly. I’ve been working on the truck line since September 2022. Spierings is a nice family business with many opportunities for growth. Each day brings new learning opportunities.’

Spierings Smart Connect: discover the future of hoisting

In the world of vertical transport, efficiency is the key to success. Not surprisingly, new technologies are finding their way into the most fundamental machines. One of the most interesting innovations in this area is Spierings Smart Connect. This pioneering remote solution completely changes the future of hoisting!

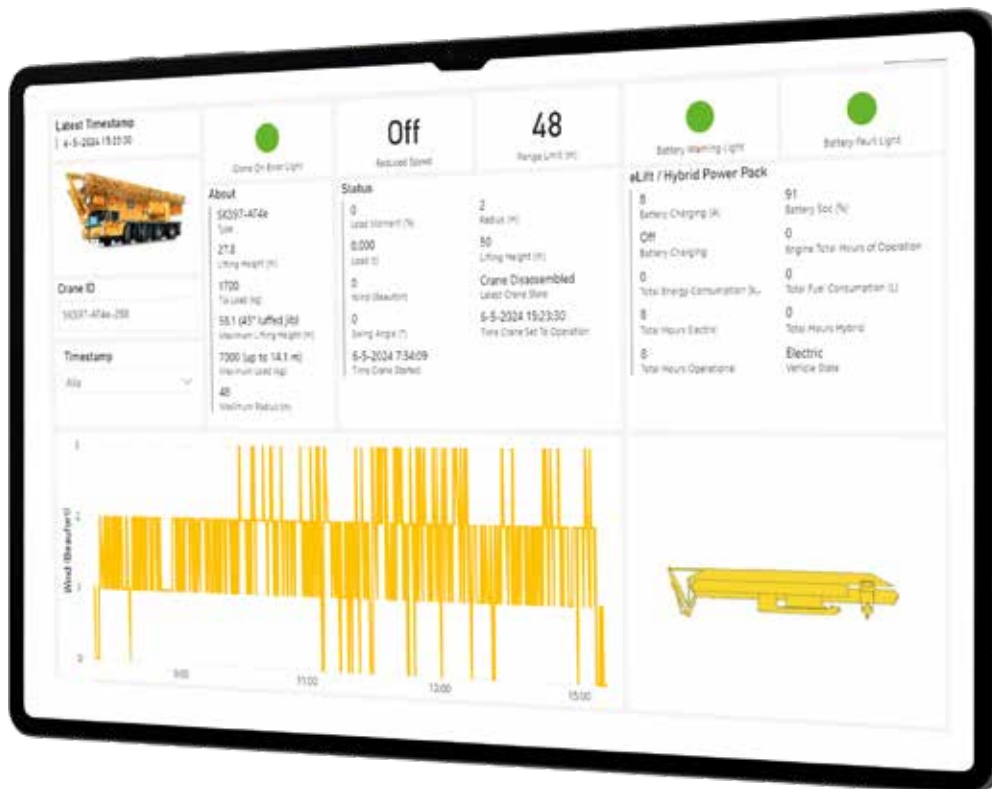
Spierings Smart Connect is much more than an online dashboard. It is an advanced platform that provides insight into the performance, efficiency and safety of mobile tower cranes. How does it work? A modem-equipped IPC (industrial computer) in the crane continuously collects a stream of data, such as load, use and hours of operation. This data is then sent wirelessly to the Cloud, where it is analysed by the system and then presented to users.

Why Spierings Smart Connect?

Spierings Smart Connect has many impressive benefits. It provides real-time insight into the condition of the crane for both operators and managers. This allows them to reduce downtime and optimise maintenance costs. Moreover, Spierings Smart Connect offers the ability to remotely limit the crane's lift radius or activate the reduced-speed program. This significantly improves the crane's flexibility and deployability! Finally, this system increases safety by providing the technical service department with access to the crane. This means that technical service personnel can carry out self-diagnostics and perform proactive maintenance. Spierings Smart Connect is equipped with Two-Factor Authentication (2FA), which requires additional authentication when logging into the account. This ensures a secure working environment.

The future of hoisting

With Spierings Smart Connect, we are entering a new era of hoisting – an era of intelligence, connectivity and insight. Whether for construction projects, logistics operations or industrial applications, Spierings Smart Connect offers an unprecedented degree of control and optimisation. It is our promise of efficiency, safety and advancement, all brought together in one powerful system. ■



‘Spierings Smart Connect offers an unprecedented degree of control and optimisation’

**“The Spierings Academy
is the training centre
for crane operators and technicians”**





Safety, efficiency and competency

With the Spierings Academy courses, you will learn everything you need to know to work safely, efficiently and competently.

The Spierings Academy is the training centre for crane operators and technicians who work with or on equipment from Spierings Mobile Cranes. Our Academy offers a wide range of quality training courses on safe use, operational procedures, maintenance protocols and technical aspects of the cranes.

Expertise

At the Spierings Academy we offer you an instructive mix of theoretical instruction and hands-on training. This ensures that every participant expands their own knowledge and skills. Through this approach, we contribute to producing well-trained professionals who can work safely and efficiently with our cranes.

Target group

The Spierings Academy is of particular interest to:

- **Crane operators**
Professionals who operate mobile tower cranes, ranging from beginners to experienced operators. For them, we have training courses that help improve skills. There are also training courses on crane technology and safety procedures.
- **Technicians**
Professionals responsible for maintenance and repair of Spierings cranes, such as technicians and mechanics. For them, we have training on effective maintenance, breakdown service and repairs. ■



Service to the max.



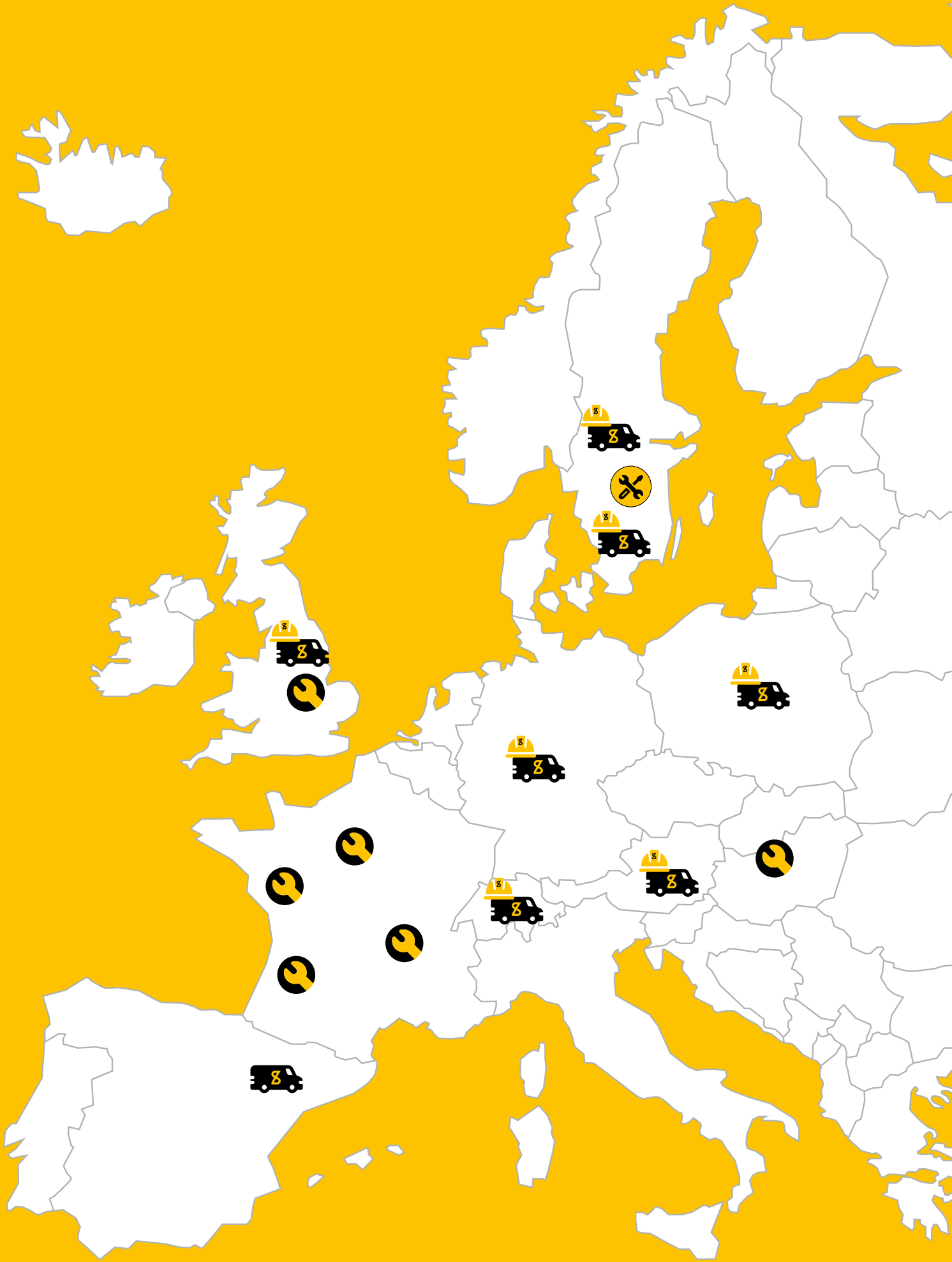
Local service



Spierings warehouse



Service partner with
Spierings warehouse



Discover our emission-free range

The emission-free eLift system has an electric mode and a hybrid mode. Both have an efficient first-line power source: the operator can choose between operating on electricity or diesel. The PowerPack® battery technology provides the extra energy needed during peak demand and recharges when the crane is not working as hard. In electric mode, the crane operates 100% emission-free, at a low noise level, without any limitations in terms of use or capacity.

To run the crane in electric mode, it can be connected to mains power. The system can be operated at between 16 and 32 amps of current draw. You set this on the display in advance, leaving power for other equipment on site. We use the excess energy from the mains connection to recharge the PowerPack® battery, which serves as a buffer that provides peak power.

In hybrid mode, a small 55 kW 3-cylinder diesel engine with the latest Stage V emissions certification is the main power source. Again, we use the excess energy to recharge the PowerPack® battery for peak power demand. >>



Plug-in Hybrid **eDrive**

Zero-emission **eLift**

SK487-AT3 eDrive

Driving: Hybrid / Electric
Hoisting: Electric / Hybrid

Specifications:

- 40-metre lift radius
- 7.000 kg max. (11.96 m)
- 1.700 kg tip load
- 55 meter max. hook height



Zero-emission **eLift**

SK597-AT4 eLift

Driving: Diesel
Hoisting: Electric / Hybrid

Specifications:

- 48 meter reikwijdte
- 7.000 kg max. (14.05 m)
- 1.700 kg tip load
- 59.2 meter max. hook height

eLift 2.0 for every job.

Our entire product range consists of sustainable models that can operate 100% emission-free. Each model is equipped with a new hybrid superstructure diesel engine with PowerPack technology, allowing you to hoist heavier and further without emissions. ■



Zero-emission eLift

SK1265-AT6 eLift

Driving: Diesel

Hoisting: Electric / Hybrid

Specifications:

- 60 meter lift radius
- 10.000 kg max. (13.2 m)
- 1.700 kg tip load
- 64 meter max. hook height



Zero-emission eLift

SK2400-R eLift

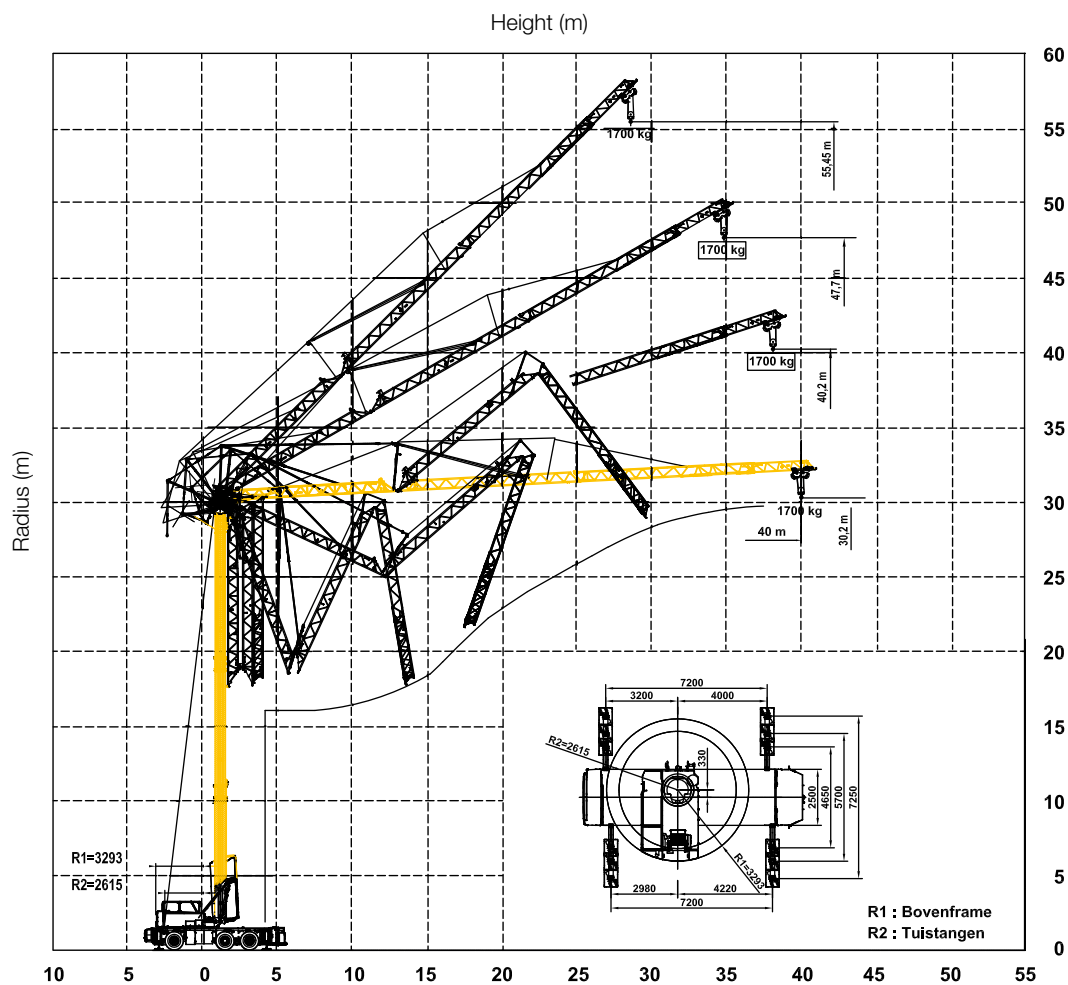
Driving: Hybride

Hoisting: Electric / Hybrid

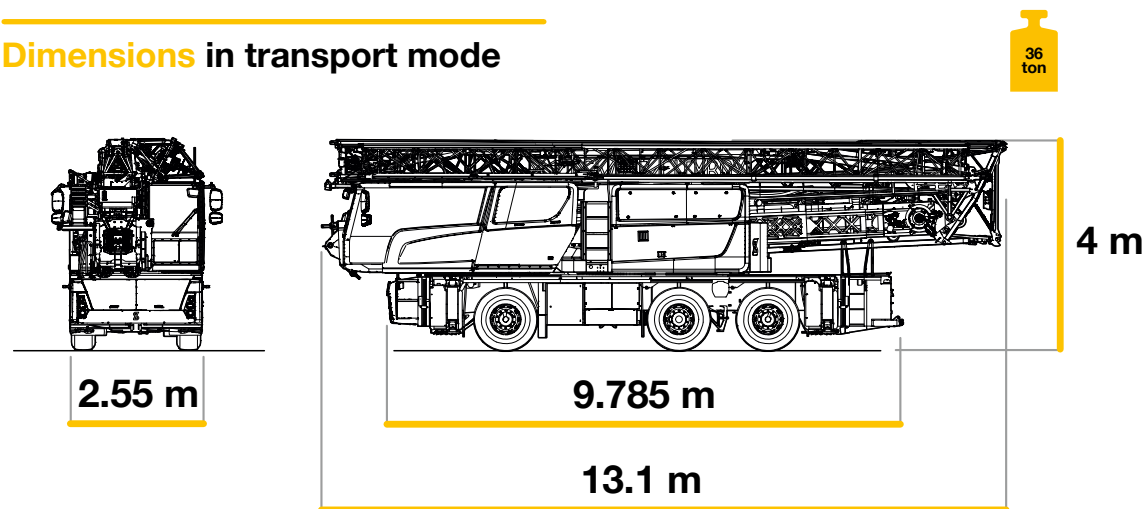
Specifications:

- 42 of 50 meter lift radius
- 18.000 kg max. (14.6 m)
- 5.500 kg tip load (42m)
- 2.500 kg tip load (50m)
- 60 meter max. hook height

Specifications SK487-AT3 eDrive



Dimensions in transport mode



Unrivalled crane dimensions

Total weight:

36.000 kg - 36.800 kg
(incl. additional ballast)

Outrigger support base:

Variable outrigger widths possible:

- 7,2 x 7,25
- 7,2 x 5,70
- 7,2 x 4,65

Support plate:

750 x 600 mm
Surface area: 0,45 m²
Ground pressure: 0,71 N/mm²

Outrigger support plate:

1000 x 900 mm
Surface area: 0,9 m²
Ground pressure: 0,35 N/mm²
Max. outrigger pressure: 315 kN

Turning radius:

Superstructure: 3170 mm
Ty bar: 2615 mm

Four different tower heights

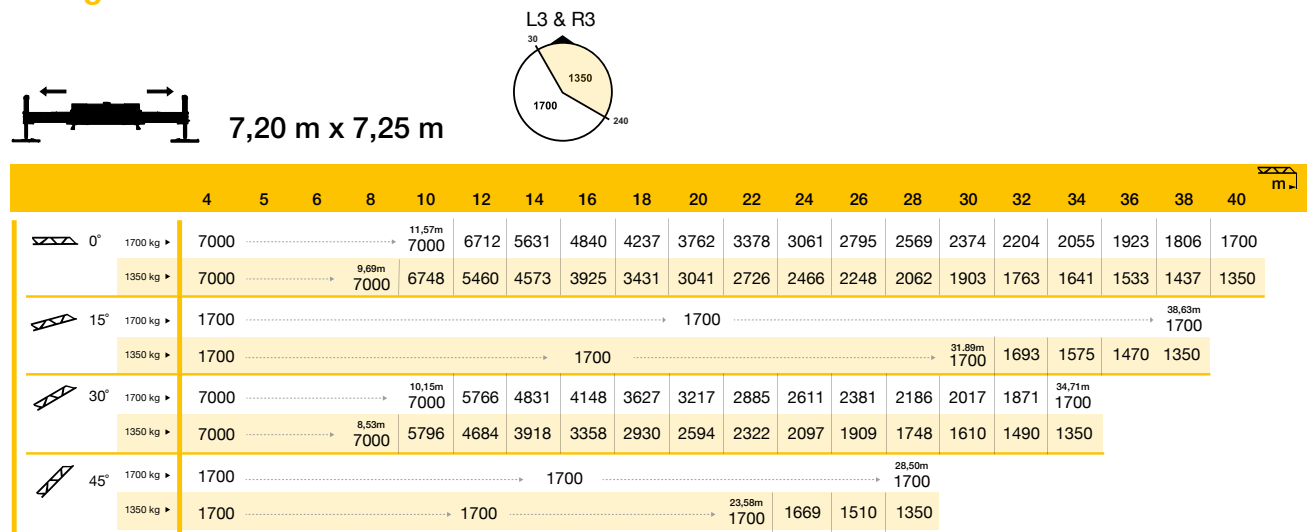
The crane can be erected to four different tower heights:

- 30 meter
- 27 meter
- 24 meter
- 21 meter

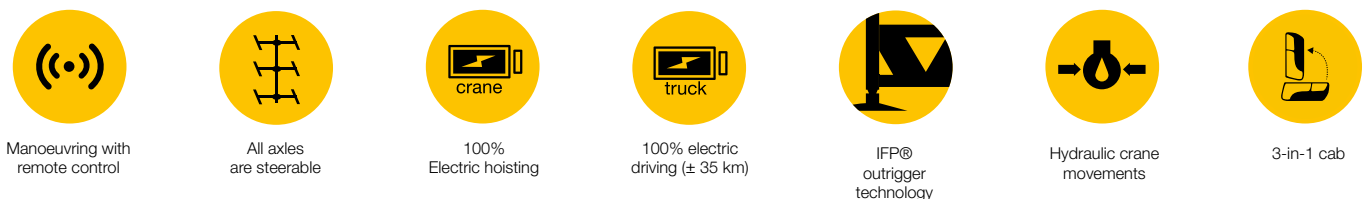
High erection curve

The crane can be erected in narrow streets where space is limited. The jib begins to unfold at a height of 17 metres. The total jib length is 40 metres. The jib can be luffed by 15/30/45 degrees from the crane cab or by remote control.

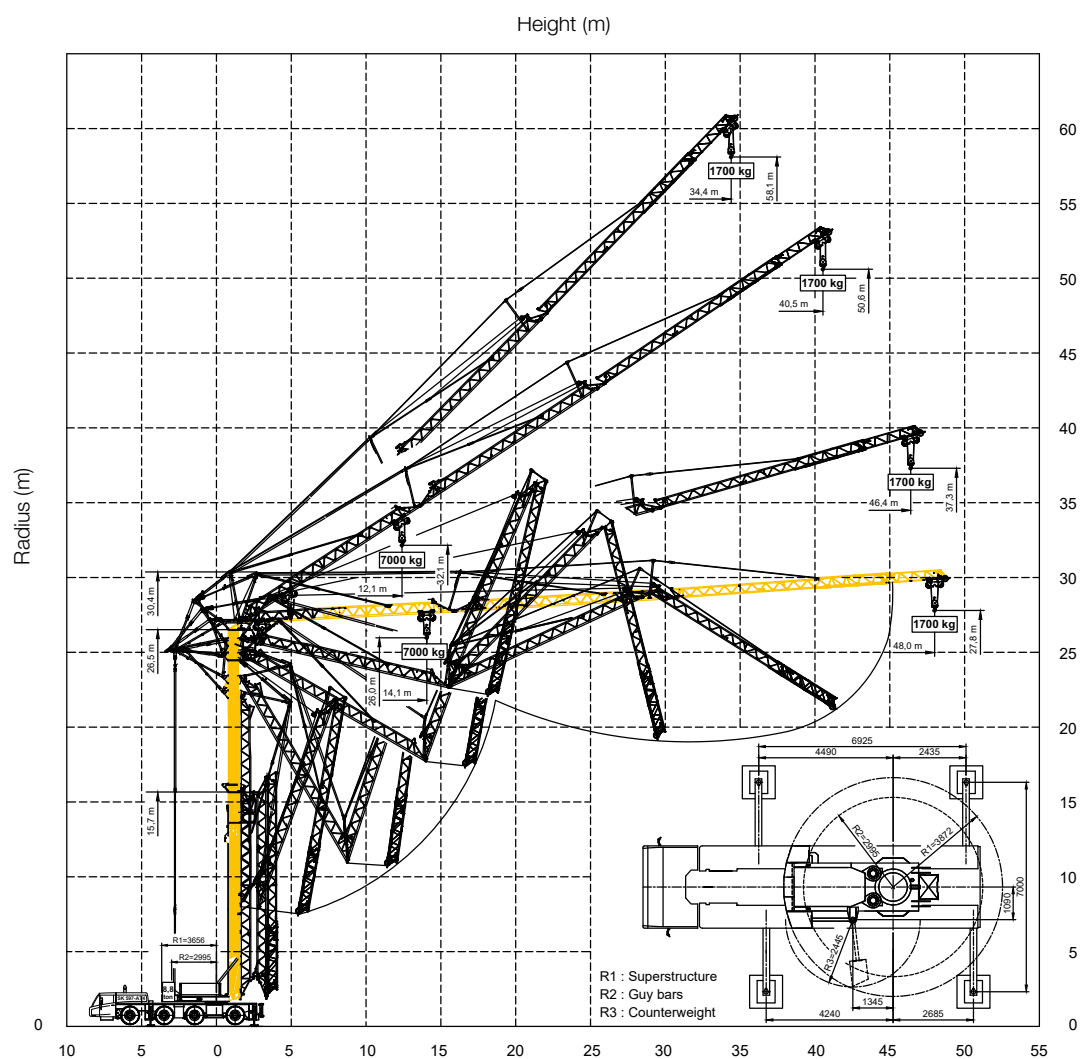
Lifting chart



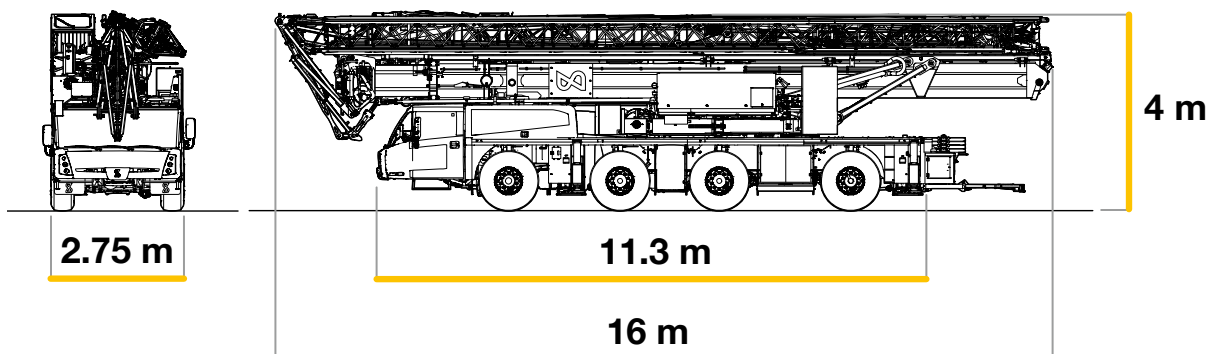
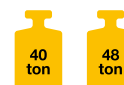
USP's



Specifications SK597-AT4 eLift



Dimensions in transport mode



Unrivalled crane dimensions

Total weight:

40.000 (10t) – 48.000 kg

Outrigger support base:

- 6,925 x 7,0
- 6,925 x 5,85

Support plate:

750 x 600 mm

Surface area: 0,45 m²

Ground pressure: 0,80 N/mm²

Outrigger support plate:

1100 x 1100 mm

Surface area: 1,21 m²

Ground pressure: 0,30 N/mm²

Max. outrigger pressure: 360 kN

Turning radius:

Counterweight radius: 3656 mm






Ty bar relative to mast: 2995 mm

Counterweight block: 8,8 ton

Lifting chart








6,925 m x 7,0 m

| | | | | | | | | | | | | | | | | | | | | |  |
|---|------|-----------------------|------|------|------|------|------|------|------|------|------|------|---------------|------|------|------|------|------|------|---------------|---|
| | 3,5 | 12 | 14 | 16 | 18 | 20 | 22 | 24 | 26 | 28 | 30 | 32 | 34 | 36 | 38 | 40 | 42 | 44 | 46 | 48 | m |
|  0° | 7000 |→ 14,06m 7000 | 6025 | 5260 | 4660 | 4180 | 3785 | 3455 | 3175 | 2935 | 2725 | 2540 | 2380 | 2235 | 2105 | 1990 | 1900 | 1790 | 1700 | kg | |
|  15° | 1700 |→ 1700 | | | | | | | | | | | | | | | | | | 46,5m 1700 | |
|  30° | 7000 |→ 12,4m 7000 | 6060 | 5185 | 4525 | 4005 | 3585 | 3245 | 2960 | 2715 | 2505 | 2325 | 2165 | 2025 | 1900 | 1790 | 1700 | | | | |
|  45° | 1700 |→ 1700 | | | | | | | | | | | 34,7m 1700 | | | | | | | | |



6,925 m x 5,85 m

| | | | | | | | | | | | | | | | | | | | | | |  |
|---|------|----------------------------|------|------|------|------|------|------|------|------|------|------|------|------|------|------|------|------|------|------|---------|---|
| | 3,5 | 10 | 12 | 14 | 16 | 18 | 20 | 22 | 24 | 26 | 28 | 30 | 32 | 34 | 36 | 38 | 40 | 42 | 44 | 46 | 48 | |
|  0° | 7000 | <div>10,86m 6895</div> | 6205 | 5165 | 4415 | 3845 | 3400 | 3040 | 2750 | 2505 | 2295 | 2115 | 1960 | 1825 | 1705 | 1595 | 1500 | 1415 | 1340 | 1265 | 1200 kg | |
|  15° | 1200 | <div>46,5m 1200</div> | | | | | | | | | | | | | | | | | | | | |
|  30° | 7000 | <div>9,62m 7000</div> | 5340 | 4440 | 3790 | 3295 | 2910 | 2600 | 2350 | 2135 | 1955 | 1800 | 1665 | 1545 | 1445 | 1350 | 1265 | 1200 | | | | |
|  45° | 1200 | <div>34,7m 1200</div> | | | | | | | | | | | | | | | | | | | | |

USP's



One job,
one man



100%
electric hoisting



Erection in 8
minutes



Steel pads



Hydraulic
movements

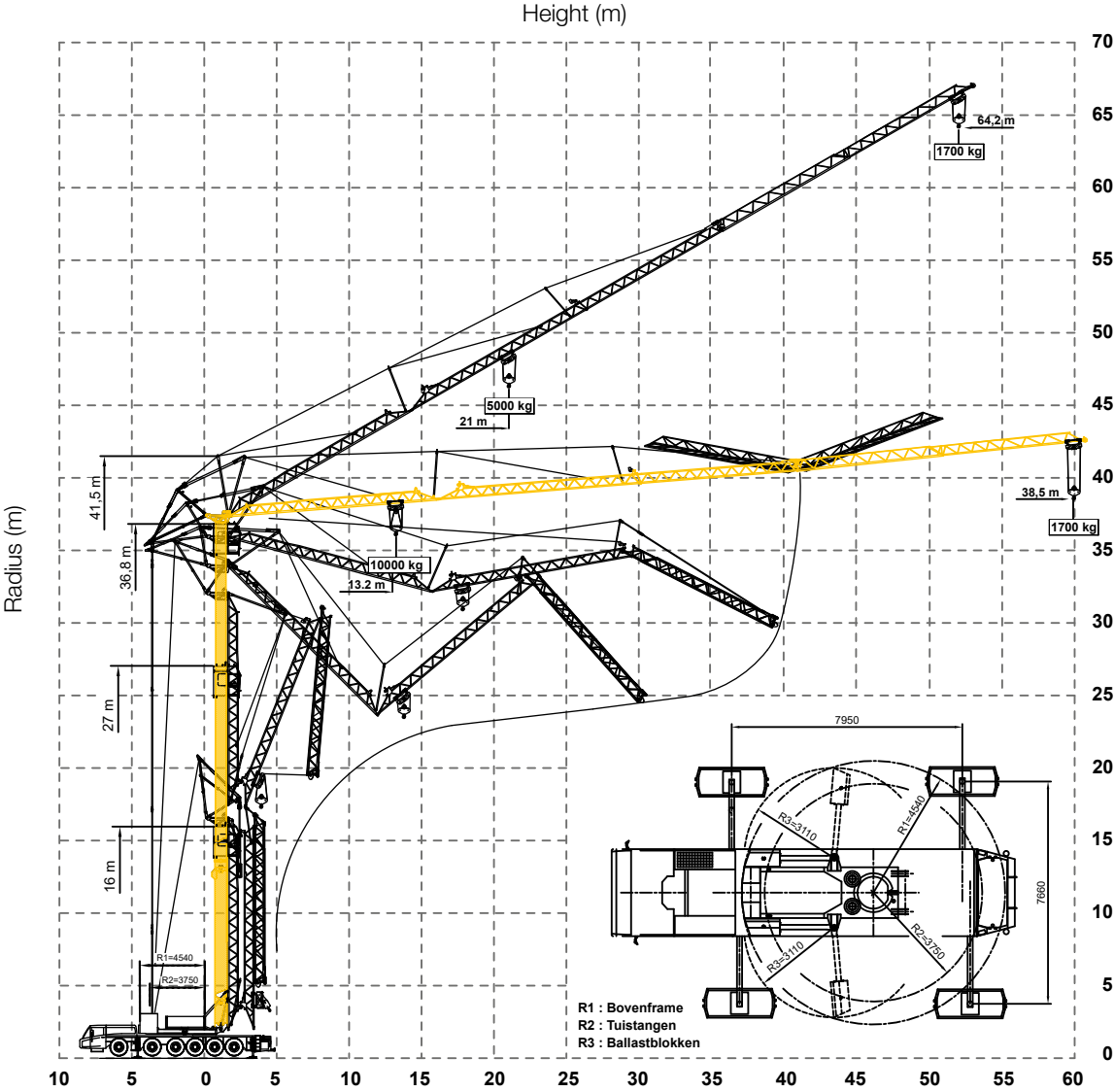


LED lighting in
the jib

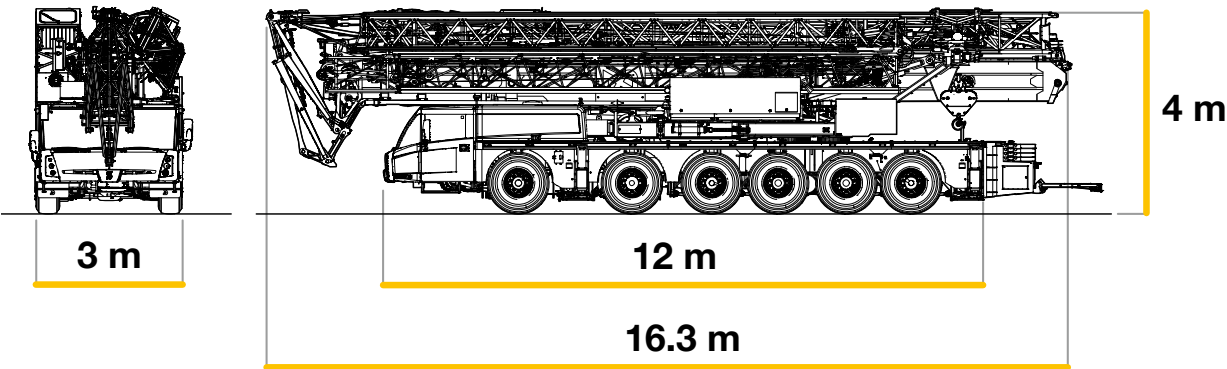


Good visibility
from the
crane cabin

Specifications SK1265-AT6 eLift



Dimensions in transport mode



Unrivalled crane dimensions

Total weight:

60.000 (10t) – 72.000 kg

Outrigger support base:

- 7,95 x 7,66
- 7,95 x 5,72

Support plate:

750 x 600 mm

Surface area: 0,45 m²

Ground pressure: 1,15 N/mm²

Outrigger support plate:

2500 x 1000 mm

Surface area: 2,35 m²

Ground pressure: 0,22 N/mm²

Max. outrigger pressure: 520 kN

Turning radius:

Counterweight radius: 4540 mm

Ty bar relative to mast: 3750 mm

Counterweight block: 12,6 ton

Lifting chart



7,95 m x 7,66 m

5.000 - 1.700 kg

10.000 - 5.000 kg

| | 3,5 | 13 | 15 | 18 | 20 | 22 | 24 | 26 | 28 | 30 | 32 | 34 | 36 | 38 | 40 | 42 | 44 | 46 | 48 | 50 | 52 | 54 | 56 | 58 | 60 | m |
|-----|-------|----------------|------|------|---------------|------|------|------|------|------|------|------|------|------|------|------|------|------|------|------|---------------|------|------|------|------|----|
| 0° | 10000 | 13,2m 10000 | 8610 | 6965 | 6170 | 5530 | 5000 | 4560 | 4190 | 3870 | 3590 | 3350 | 3130 | 2940 | 2770 | 2615 | 2475 | 2345 | 2230 | 2125 | 2025 | 1935 | 1850 | 1775 | 1700 | kg |
| 30° | 5000 | | | | 21,0m 5000 | 4740 | 4285 | 3905 | 3580 | 3305 | 3065 | 2855 | 2665 | 2500 | 2350 | 2220 | 2095 | 1985 | 1885 | 1795 | 52,2m 1700 | | | | | |



6,925 m x 5,72 m

| | 3,5 | 8 | 10 | 12 | 14 | 16 | 18 | 20 | 22 | 24 | 26 | 28 | 30 | 32 | 34 | 36 | 38 | 40 | 42 | 44 | 46 | 48 | 50 | 52 | 54 | 56 | 58 | 60 | m |
|-----|-------|--------------|------|---------------|------|------|------|------|------|------|------|------|------|------|------|------|------|------|------|------|------|------|------|--------------|-----|-----|-----|-----|----|
| 0° | 10000 | 8,1 10000 | 7685 | 6695 | 5085 | 4325 | 3755 | 3305 | 2945 | 2650 | 2405 | 2195 | 2015 | 1860 | 1725 | 1605 | 1495 | 1400 | 1315 | 1235 | 1165 | 1100 | 1040 | 985 | 930 | 885 | 840 | 800 | kg |
| 30° | 5000 | | | 12,5m 5000 | 4355 | 3700 | 3205 | 2815 | 2505 | 2250 | 2035 | 1855 | 1700 | 1565 | 1455 | 1340 | 1250 | 1165 | 1090 | 1025 | 960 | 905 | 850 | 82,2m 800 | | | | | |

USP's



One job,
one man



100%
electric hoisting



Erection in
11 minutes



Steel
pads



Hydraulic
movements

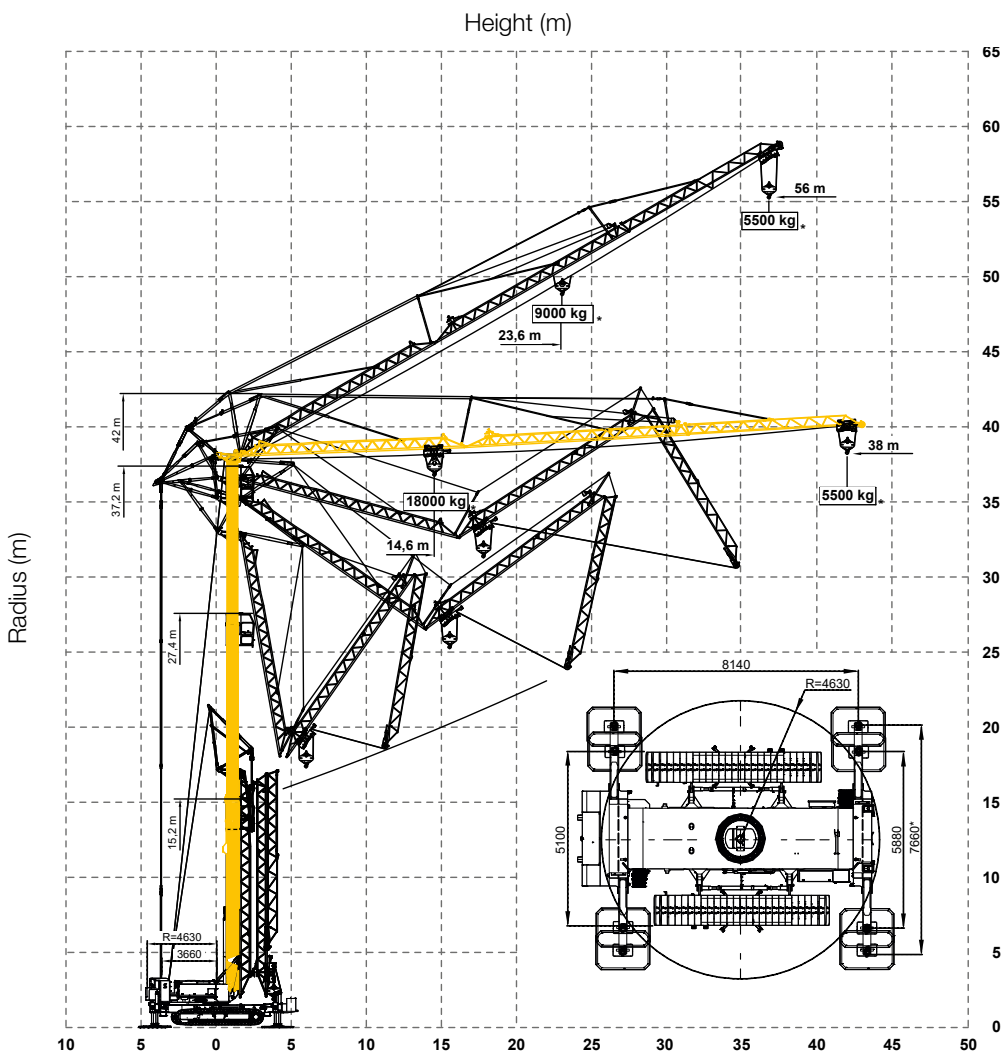


LED lighting
in the jib

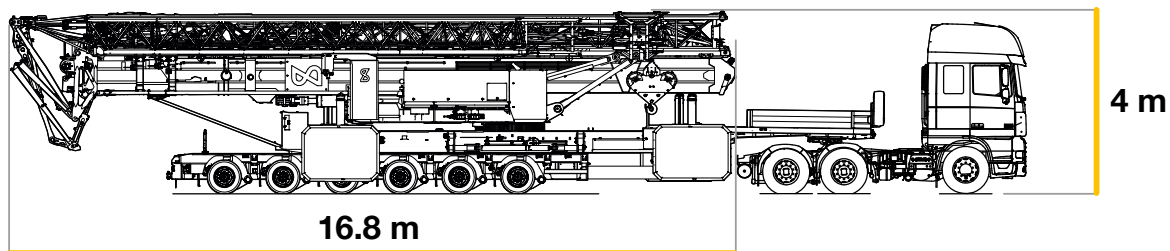
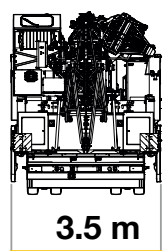


Good visibility
from the
crane cabin

Specifications SK2400-R eLift 42m



Dimensions in transport mode



Unrivalled crane dimensions

Total weight:
86.500 kg

Outrigger support base:

- 8,14 x 7,66
- 8,14 x 5,88

Optional:

50 meter jib

Outrigger support plate:

1800 x 1300 mm

Max. outrigger pressure: 600 kN

Ground pressure: 0,26 N/mm²

Turning radius:

Counterweight radius: 4630 mm

Ty bar relative to mast: 3660 mm

Lifting chart



5,88 m x 8,14 m



9.000 kg



18.000 kg



| | | 3,5 | 6 | 8 | 10 | 12 | 14 | 16 | 18 | 20 | 22 | 24 | 26 | 28 | 30 | 32 | 34 | 36 | 38 | 40 | 42 | m |
|-----|-----|-------|---|-------|----|-------|-------|-------|------|------|------|------|------|------|------|------|------|------|------|------|------|----|
| 0° | LM2 | 18000 | ← | 18000 | → | 15590 | 13000 | 11130 | 9720 | 8615 | 7730 | 7005 | 6395 | 5880 | 5435 | 5050 | 4715 | 4415 | 4150 | 3915 | 3700 | kg |
| 30° | LM2 | 9000 | ← | 9000 | → | 15,8 | 9000 | 8365 | 7410 | 6645 | 6010 | 5485 | 5040 | 4655 | 4320 | 4030 | 36,6 | 3700 | | | | |



7,66 m x 8,14 m



| | | 3,5 | 6 | 8 | 10 | 13,5 | 14 | 16 | 18 | 20 | 22 | 24 | 26 | 28 | 30 | 32 | 34 | 36 | 38 | 40 | 42 | m |
|-----|-----|-------|---|-------|----|-------|-------|-------|-------|-------|------|------|------|------|------|------|------|------|------|----|----|----|
| 0° | LM2 | 18000 | ← | 18000 | → | 16195 | 14165 | 12575 | 11300 | 10255 | 9380 | 8635 | 8000 | 7445 | 6960 | 6530 | 6150 | 5810 | 5500 | | | kg |
| 30° | LM2 | 9000 | ← | 9000 | → | 8070 | 7425 | 6875 | 6395 | 5975 | 5500 | | | | | | | | | | | |

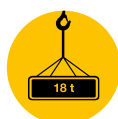
USP's



Manoeuvring with
remote control



100%
electric hoisting



Strongest
mobile tower
crane



Erection in
60 minutes



Hydraulic
movements

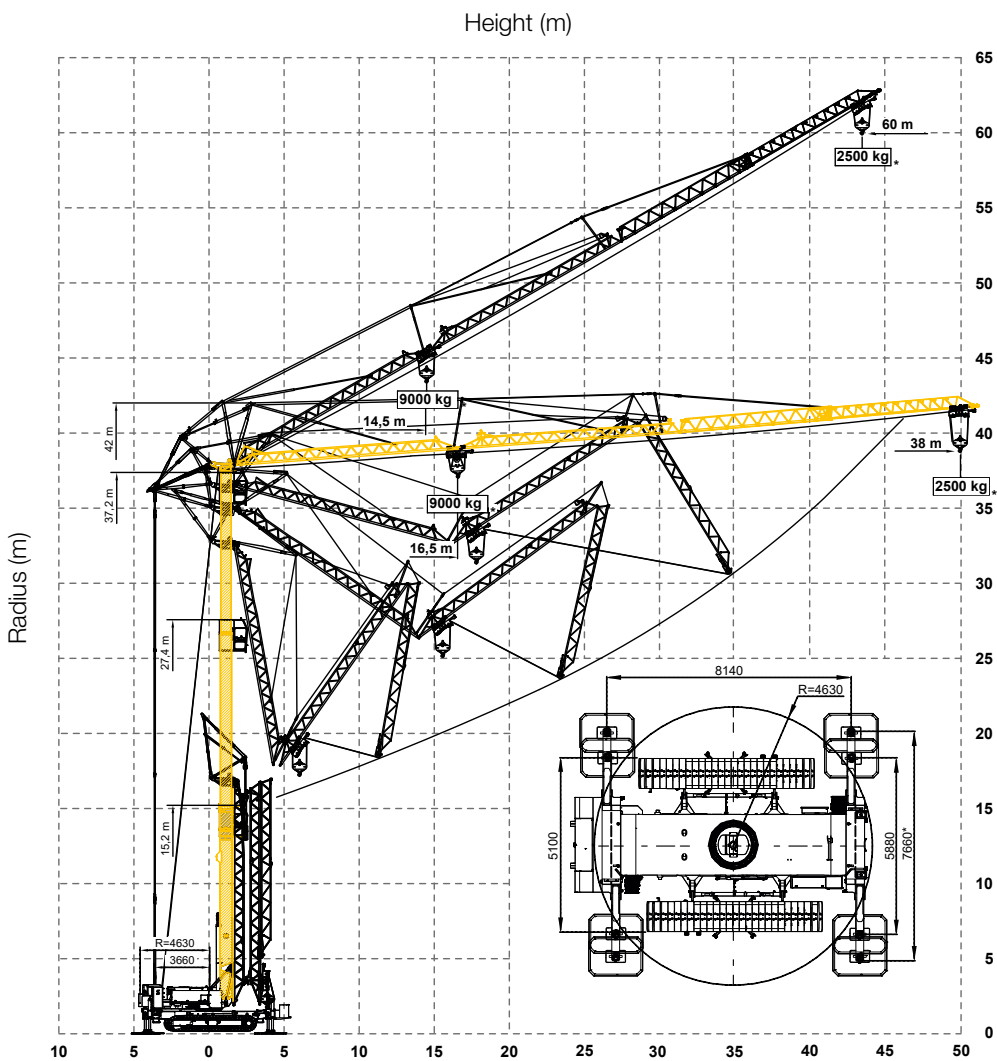


Efficient
transport

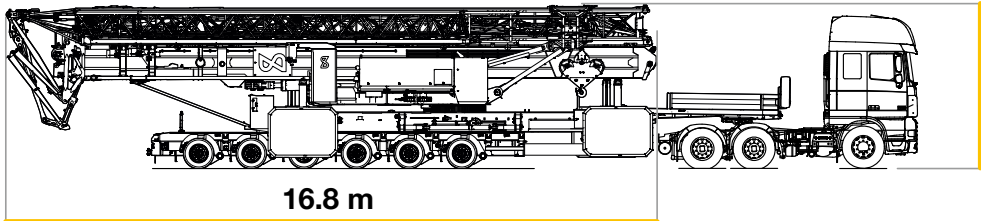
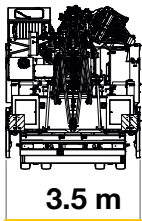


Autonomous
erection

Specifications SK2400-R eLift 50m



Dimensions in transport mode



4 m

Unrivalled crane dimensions

Total weight:
87.000 kg

Outrigger support base:

- 8,14 x 7,66
- 8,14 x 5,88

Outrigger support plate:

1800 x 1300 mm

Max. outrigger pressure: 520 kN

Ground pressure: 0,22 N/mm²

Turning radius:

Counterweight radius: 4630 mm

Ty bar relative to mast: 3660 mm

Lifting chart



5,88 m x 8,14 m






9.000 kg



18.000 kg






| | | | | | | | | | | | | | | | | | | | | | |  | |
|---|-----|-----|------|--------|------|------|------|------|------|------|------|------|------|------|------|------|------|------|------|------|------|---|----|
| | | | 3,5 | 14 | 15,5 | 18 | 20 | 22 | 24 | 26 | 28 | 30 | 32 | 34 | 36 | 38 | 40 | 42 | 44 | 46 | 48 | 50 | m |
|  | 0° | LM1 | 9000 |→ | 9000 | 7585 | 6715 | 6015 | 5440 | 4960 | 4555 | 4205 | 3900 | 3635 | 3400 | 3190 | 3005 | 2835 | 2685 | 2545 | 2415 | 2300 | kg |
| | | | 3,5 | 14,5 | 16 | 18 | 20 | 22 | 24 | 26 | 28 | 30 | 32 | 34 | 36 | 38 | 40 | 42 | 43,5 | | | | |
|  | 30° | LM1 | 9000 |→ | 8065 | 7030 | 5760 | 5155 | 4660 | 4245 | 3890 | 3590 | 3325 | 3095 | 2890 | 2710 | 2550 | 2400 | 2300 | | | kg | |



7,66 m x 8,14 m



| | | | | | | | | | | | | | | | | | | | | | |  | |
|---|-----|-----|------|--------|------|------|------|------|------|------|------|------|------|------|------|------|------|------|------|------|------|---|----|
| | | | 3,5 | 14 | 16,5 | 18 | 20 | 22 | 24 | 26 | 28 | 30 | 32 | 34 | 36 | 38 | 40 | 42 | 44 | 46 | 48 | 50 | |
|  | 0° | LM1 | 9000 |→ | 9000 | 8180 | 7240 | 6490 | 5875 | 5360 | 4920 | 4545 | 4220 | 3935 | 3680 | 3455 | 3255 | 3075 | 2910 | 2760 | 2625 | 2500 | kg |
| | | | 3,5 | 14,5 | 16 | 18 | 20 | 22 | 24 | 26 | 28 | 30 | 32 | 34 | 36 | 38 | 40 | 42 | 43,5 | | | | |
|  | 30° | LM1 | 9000 |→ | 8065 | 7030 | 6220 | 5570 | 4660 | 4585 | 4210 | 3885 | 3600 | 3355 | 3135 | 2940 | 2765 | 2610 | 2500 | kg | | | |

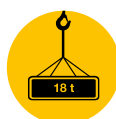
USP's



Manoeuvring with
remote control



100%
electric hoisting



Strongest mobile
tower crane



Erection in
60 minutes



Hydraulic
movements



Efficient
transport



Autonomous
erection



*Printed with environmentally
certified printing processes*

www.spieringscranes.com

sales@spieringscranes.com

+31(0)412 69 77 77

SPIERINGS
MOBILE CRANES